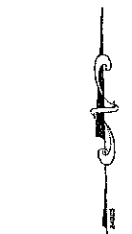
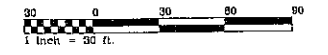


SEARCH MARK
No. 2531



BEARINGS ON THIS MAP ARE BASED ON GPS
ROAD AS STATE PLANE ZONE-NY WEST

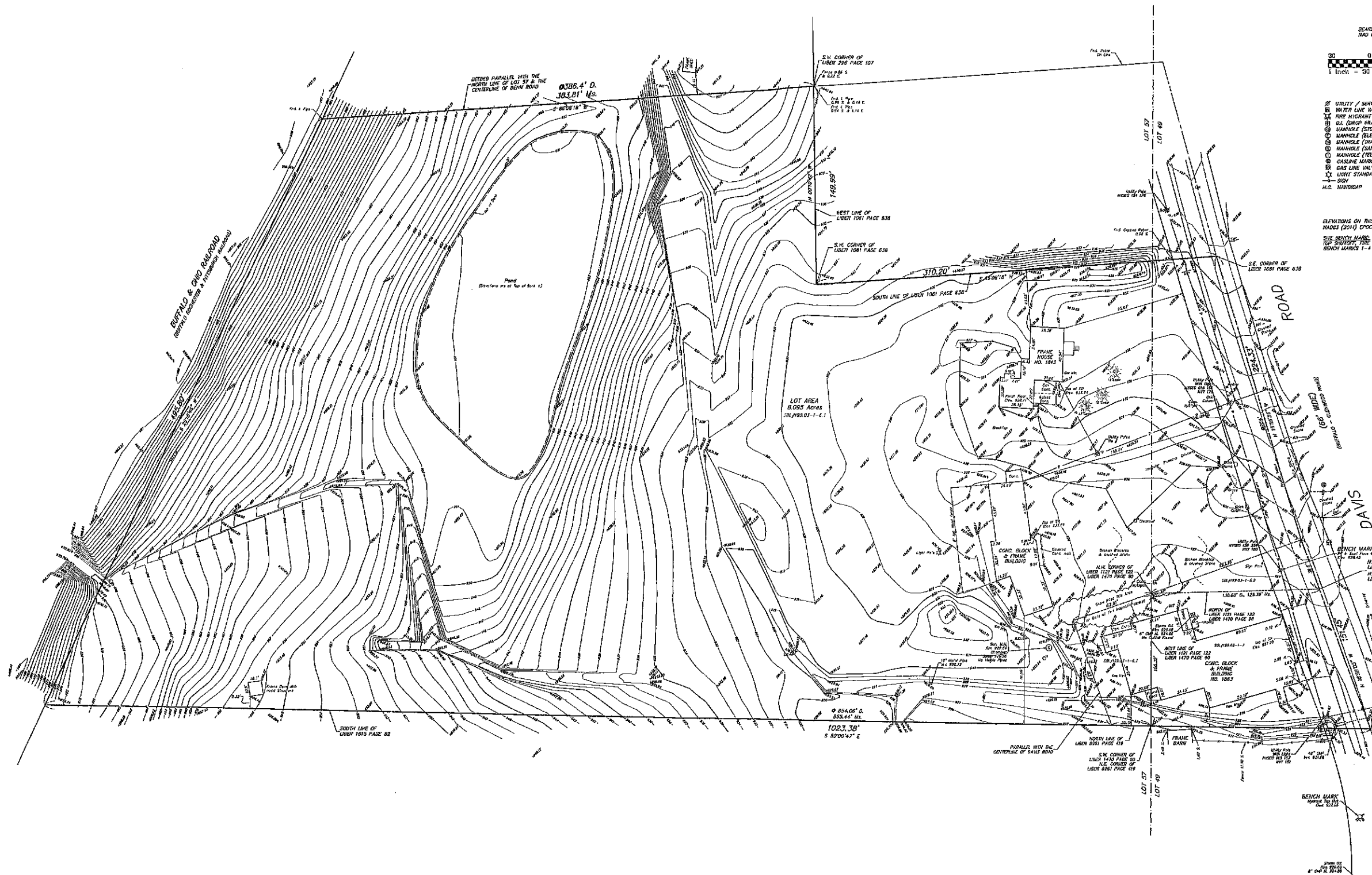


LEGEND

- | | |
|--------------------------|---------------------|
| ○ UTILITY / SERVICE POLE | R.O.W. RIGHT OF WAY |
| □ WATER LINE VALVE | CONC. CONCRETE |
| ○ FIRE HYDRANT | INCL. INVERT |
| ○ MANHOLE (STORM) | MAN. MANHOLE |
| ○ MANHOLE (ELECTRIC) | — GAS LINE |
| ○ MANHOLE (SANITARY) | — WATER LINE |
| ○ MANHOLE (TELEPHONE) | — TELEPHONE LINE |
| ○ GAS LINE VALVE | — ELECTRIC LINE |
| ○ LIGHT STANDARD | — UTILITY LINES |
| ○ SIGN | ○ CHAIN MARKER |
| ○ H.C. HANDICAP | ○ DEED |
| | ○ REARWARD |
| | ○ LIBRY |
| | ○ PAGE |

ELEVATION DATA

ELEVATIONS ON THIS MAP WERE DETERMINED UTILIZING GPS DATA
MADE (2011) EPOCH 2010.0 DATA
SITE SEARCH MARK
TOP SURVEY THE HYDRANTS
SEARCH MARKS 1-4 AS SHOWN HEREON



UTILITIES

The underground utilities shown have been located from field survey information & existing drawings. The surveyor makes no guarantee that the underground utilities shown correctly of such utilities in the area, either in service or abandoned. The surveyor further does not warrant that the underground utilities shown are in the exact location indicated although he does certify that they are located as accurately as possible from the information available. This surveyor has not physically located the underground utilities.

Note: Underground utility information has been obtained from the respective utility companies. As the information is received, this map will be amended to reflect said information.

- | | | |
|------------------------------------------------------------------|-----------------------------------------------------------------|----------------------------------------------------|
| Holland's Real
Estate
(716) 657-7287 | Time Warner Cable
Attn: Clark Smith
(800) 292-8800 | Nation
Attn: Mark Grossman
(716) 846-8858 |
| Erie County Meter Dept.
Attn: Steve Gurdler
(716) 525-5283 | N.Y.S. Electric & Gas
Attn: Steve Cappallo
(716) 651-5256 | Norfolk Gas
Attn: Ray Schultz
(315) 426-8319 |

THIS SURVEY HAS BEEN PREPARED IN ACCORDANCE WITH THE CURRENT STANDARDS FOR LAND SURVEYING PRACTICE BY THE PROFESSION OF THE SURVEYOR OF THE STATE OF NEW YORK.

RECORDING 2021 BY: **Millard, Mackay & Delleo**
LAND SURVEYORS, LLP
150 ASHD DRIVE
BUFFALO, NEW YORK 14225
PHONE (716) 634-5446 • FAX 637-3841

AMEND: SURVEY DATE: 3-22-21
DRAWING DATE: 3-26-21
SCALE: 1" = 30'
"ALL RIGHTS RESERVED"

BOUNDARY & TOPOGRAPHIC SURVEY
PART OF LOT 49A-57 SECTION TOWNSHIP 9 RANGE 6 OF THE
Holland Land Company's SURVEY - Erie COUNTY, N.Y.
SURVEY OF: 1843, 1863 & Vacant Parcel Davis Food, Town of Aurora
SBL No. 164.03-1-6.1, 6.2, 6.3, 6.4